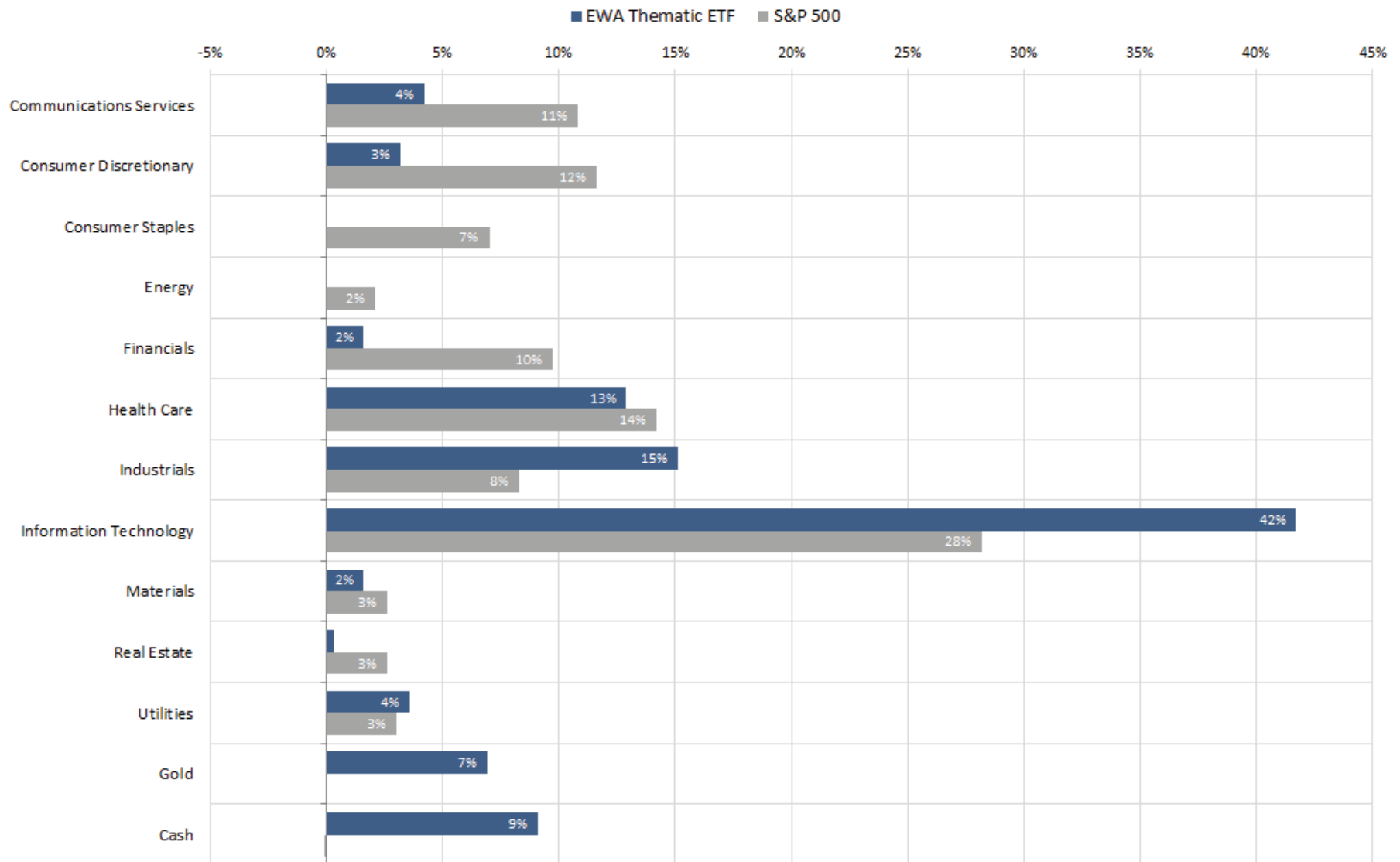


Thematic ETF Strategy GICS Sector Weights



This Investment Strategy is not a recommendation to buy or sell any of the securities mentioned. The comments made are opinions of Exencial Wealth Advisors. No representation is made as to the accuracy or completeness of this information.

The S&P 500® is widely regarded as the best single gauge of large-cap U.S. equities. There is over USD 9.9 trillion indexed or benchmarked to the index, with indexed assets comprising approximately USD 3.4 trillion of this total. The index includes 500 leading companies and covers approximately 80% of available market capitalization.